

ACCESSORIES

CONVERSION BRACKET (A)



CONVERSION BRACKET (B)



CONVERSION BRACKET (C)



FUSIBLE LINK



HOLD OPEN ARM



SLIDE ARM



ARM EXTENDED LINK



COVER

NHN[®] 510 SERIES

The NHN door closer offers a comprehensive range of hydraulic door closers to suit various applications. We maintain our long standing worldwide reputation for high quality and reliability.

No. 510 series door closer is inexpensive model to suit the most standard doors.

The NHN 510 series is backed up with a 5 year 'No Quibble' guarantee

FEATURES

- Available in variable power EN2-4 by position.
- Back-check function optional.
- Easy installation and adjustment.
- Comprehensive range of accessories.
- Non-handed.



6th Floor, Marutake Honmachi Building, Honmachi
1-6-18, Chuo-ku, Osaka 541-0053, Japan

Tel: +81-(0)6-6265-1130

Fax: +81-(0)6-6265-1132

E-Mail: info@kenwa.co.jp http://www.kenwa.co.jp

http://www.micomautodoor.com

DISTRIBUTED BY



SELECTION CHART

Power size (EN)	Door width (mm)	Door weight (kg)	510 SERIES			
			REGULAR	HOLD OPEN	BACKCHECK	SLIDE ARM
2	850	40	510	510 S	510 BC	510 GL
3	950	60				-
4	1100	80				-

FUNCTION

Back-check function

(optional)

This function is built into the door closer body and checks the outward swing of the door.

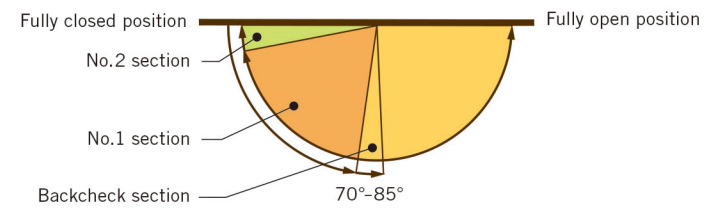
Most suited where the opening door might hit a wall i.e. in a corridor, or where it could injure someone if opened too quickly.

It is recommended for use on externally opening doors in windy environments.

The backcheck function works between 70° & 85°.

The backcheck strength can be adjusted by turning the backcheck valve screw located on the end of the closer body.

IT SHOULD NOT BE REGARDED AS A DOOR STOP !

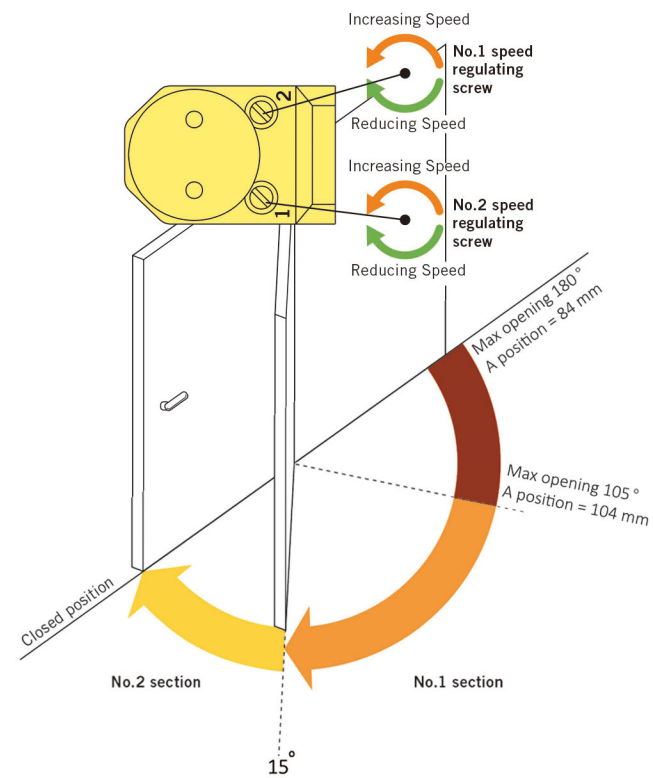


ADJUSTMENT

Force adjustment

Max door opening Degrees	Power size (EN)	Door width (mm)	Door weight (kg)	A	Shoe
180	2	850	40	84	
180	3	950	60	84	
105				104	
105	4	1100	80	104	

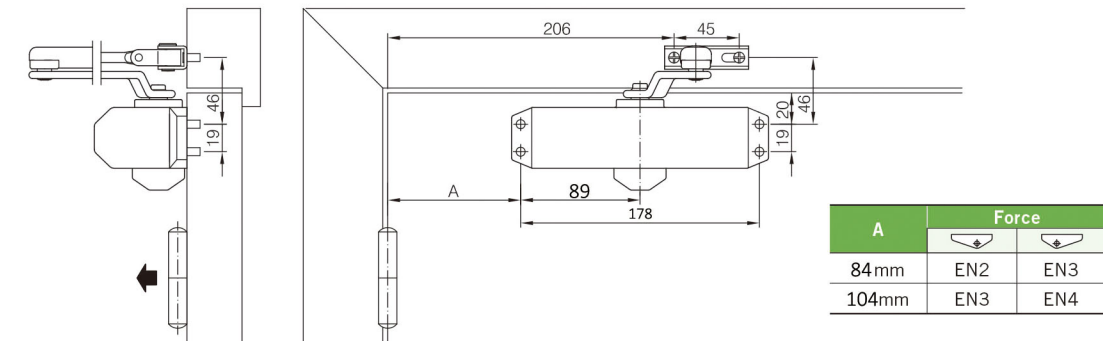
Closing speed adjustment



INSTALLATION

Standard installation

This illustration shows a right handed configuration (DIN L).



Top jamb installation

This illustration shows a right handed configuration (DIN L).

